

Structure and conformational states of the bovine mitochondrial ATP synthase by cryo-EM

Anna Zhou^{1,2†}, Alexis Rohou^{3†}, Daniel G Schep^{1,2}, John V Bason⁴,
Martin G Montgomery⁴, John E Walker^{4*}, Nikolaus Grigorieff^{3*},
John L Rubinstein^{1,2,5*}

¹The Hospital for Sick Children Research Institute, Toronto, Canada; ² Department of Medical Biophysics, The University of Toronto, Ontario, Canada; ³Janelia Research Campus, Howard Hughes Medical Institute, Ashburn, United States; ⁴MRC Mitochondrial Biology Unit, Cambridge, United Kingdom; ⁵ Department of Biochemistry, The University of Toronto, Ontario, Canada

Abstract Adenosine triphosphate (ATP), the chemical energy currency of biology, is synthesized in eukaryotic cells primarily by the mitochondrial ATP synthase. ATP synthases operate by a rotary catalytic mechanism where proton translocation through the membrane-inserted F_0 region is coupled to ATP synthesis in the catalytic F_1 region via rotation of a central rotor subcomplex. We report here single particle electron cryomicroscopy (cryo-EM) analysis of the bovine mitochondrial ATP synthase. Combining cryo-EM data with bioinformatic analysis allowed us to determine the fold of the a subunit, suggesting a proton translocation path through the F_0 region that involves both the a and b subunits. 3D classification of images revealed seven distinct states of the enzyme that show different modes of bending and twisting in the intact ATP synthase. Rotational fluctuations of the c_8 -ring within the F_0 region support a Brownian ratchet mechanism for proton-translocation-driven rotation in ATP synthases.

DOI:10.7554/eLife.10180.001

*For correspondence: walker@mrc-mbu.cam.ac.uk (JEW); niko@grigorieff.org (NG); john.rubinstein@utoronto.ca (JLR)

†These authors contributed equally to this work

Competing interests: The authors declare that no competing interests exist.

Funding: See page 11

Received: 21 July 2015

Accepted: 05 October 2015

Published: 06 October 2015

Reviewing editor: Stephen C Harrison, Harvard Medical School, United States

© Copyright Zhou et al. This article is distributed under the terms of the [Creative Commons Attribution License](https://creativecommons.org/licenses/by/4.0/), which permits unrestricted use and redistribution provided that the original author and source are credited.

Introduction

In the mitochondria of eukaryotes, adenosine triphosphate (ATP) is produced by the ATP synthase, a ~600 kDa membrane protein complex composed of a soluble catalytic F_1 region and a membrane-inserted F_0 region. The ATP synthase is found in the inner membranes of mitochondria, with the F_1 region in the mitochondrial matrix and the F_0 region accessible from the inter-membrane space between the mitochondrial outer and inner membranes. In the mammalian enzyme, the subunit composition is $\alpha_3\beta_3\gamma\delta\varepsilon$ for the F_1 region with subunits a, e, f, g, A6L, DAPIT, a 6.8 kDa proteolipid, two membrane-inserted α -helices of subunit b, and the c_8 -ring forming the F_0 region (Walker, 2013). The rotor subcomplex consists of subunits γ , δ , ε , and the c_8 -ring. In addition to the rotor, the F_1 and F_0 regions are linked by a peripheral stalk composed of subunits OSCP, d, F_6 , and the hydrophilic portion of subunit b. Approximately 85% of the structure of the complex is known at high resolution from X-ray crystallography of constituent proteins, which have been assembled into a mosaic structure within the constraints of a cryo-EM map at 18 Å resolution (Walker, 2013; Baker et al., 2012).

The proton motive force, established by the electron transport chain during cellular respiration, drives protons across the F_0 region through the interface between the a subunit and the c_8 -ring, inducing rotation of the rotor (Boyer, 1997; Walker, 1998). While the mechanism by which ATP synthesis and hydrolysis are coupled to rotation of the γ subunit is now understood well (Walker, 2013), it is still unresolved how rotation of the central rotor is coupled to proton translocation through the

eLife digest A molecule called adenosine triphosphate (ATP) is the energy currency in cells. Most of the ATP used by cells is made by the membrane-embedded enzyme ATP synthase. This enzyme is found in membranes inside specialized compartments known as mitochondria. ATP synthase is made up of many protein subunits that work together as a molecular machine. Hydrogen ions flow across the membrane through the ATP synthase, turning a rotor structure within the enzyme, which leads to the production of ATP.

It is not known how the transport of hydrogen ions causes rotation of the rotor. Some researchers have proposed that the enzyme works as a ratchet that is driven by the random Brownian motion of the rotor. That is, the rotational position of the rotor fluctuates randomly, but a ratchet mechanism ensures that there is a net rotation in one direction. However, there is currently little experimental evidence to back up this theory, which is known as the Brownian ratchet model.

Zhou, Rohou et al. used a technique called electron cryomicroscopy (or cryo-EM) to study ATP synthase from cows. The cryo-EM data made it possible to use computer software to construct a three-dimensional model of the enzyme that is more detailed than previous attempts. Zhou, Rohou et al. show that the structure of ATP synthase is flexible, with the different protein subunits bending, flexing, and rotating relative to each other. This variability in the position of the rotor is consistent with the Brownian ratchet model.

Together, these findings reveal important new details about the structure of ATP synthase and provide some of the first experimental evidence for the Brownian ratchet model. The new three-dimensional structure of ATP synthase will open the door to testing hypotheses of how the ATP synthase works.

[DOI:10.7554/eLife.10180.002](https://doi.org/10.7554/eLife.10180.002)

F_0 region. The most popular model suggests that proton translocation occurs through two offset half channels near the a subunit/c subunit interface (Junge et al., 1997, Junge, 2005). In this model, one half channel allows protons to move half-way across the lipid bilayer in order to protonate the conserved Glu58 residue of one of the c subunits. The other half channel allows deprotonation of the adjacent c subunit (Lau and Rubinstein, 2012), setting up the necessary condition for a net rotation of the entire c-ring. Rotation does not occur directly from the protonating half channel to the deprotonating half channel, but in the opposite direction so that the protonated, and therefore uncharged, Glu residues traverse through the lipid environment before reaching the deprotonating half channel. The deprotonated Glu residue prevents the ring from rotating in the opposite direction, which would place the charged residue in the hydrophobic environment of the lipid bilayer. Rotation of the c-ring occurs due to Brownian motion, making the enzyme a Brownian ratchet.

A recent cryo-EM map of the *Polytomella* sp. ATP synthase dimer showed two long and tilted α -helices from the a subunit in contact with the c_{10} -ring of that species (Allegretti et al., 2015). This arrangement of α -helices from the a and c subunits was also seen in the *Saccharomyces cerevisiae* V-type ATPase (Zhao et al., 2015a). Cryo-EM of the *S. cerevisiae* V-ATPase demonstrated that images of rotary ATPases could be separated by 3D classification to reveal conformations of the complex that exist simultaneously in solution. In the work described here, we obtained and analyzed cryo-EM images of the bovine mitochondrial ATP synthase. 3D classification of the images resulted in seven distinct maps of the enzyme, each showing the complex in a different conformation. By averaging the density for the proton-translocating a subunit from the seven maps, we generated a map segment that shows α -helices clearly. Analysis of evolutionary covariance in the sequence of the a subunit (Göbel et al., 1994) allowed the entire a subunit polypeptide to be traced through the density map. The resulting atomic model for the a subunit was fitted into the maps for the different rotational states, suggesting a path for protons through the enzyme and supporting the Brownian ratchet mechanism for the generation of rotation (Junge et al., 1997; 2005), and thereby ATP synthesis, in ATP synthases.

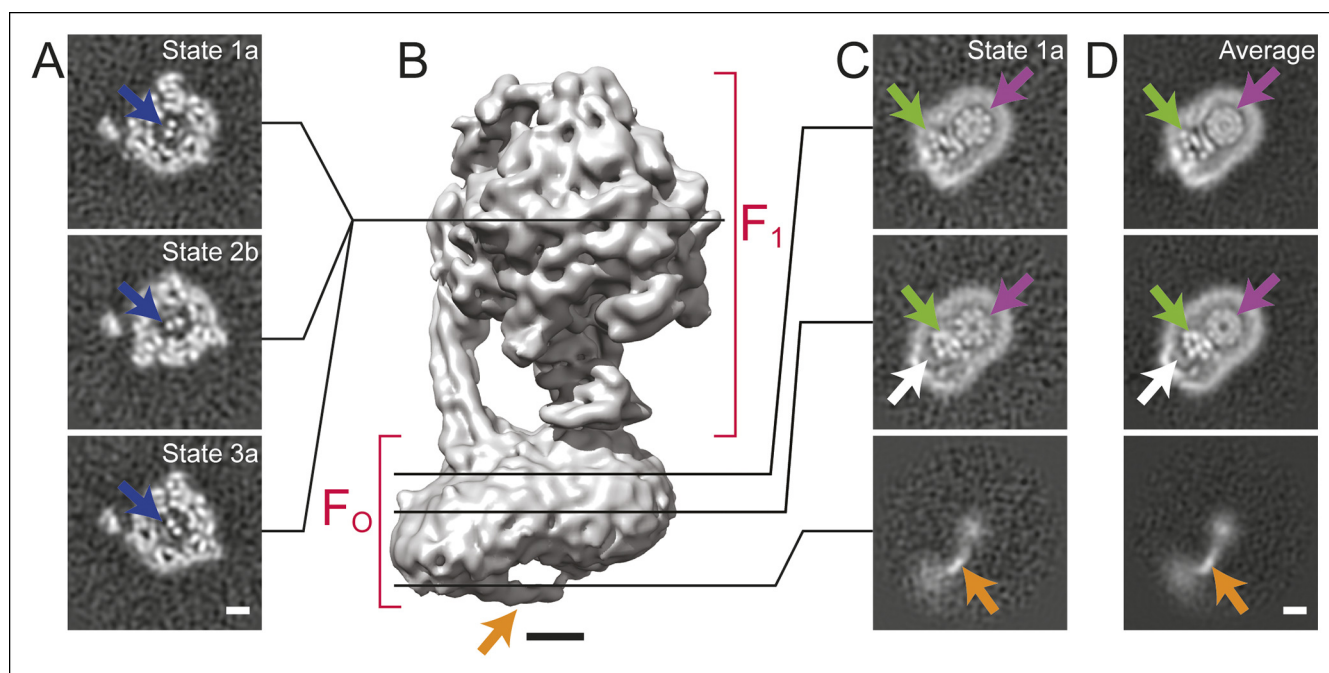


Figure 1. Cross-sections through maps. (A) Cross-sections through the F_1 regions of the different maps show that states 1, 2, and 3 are related by $\sim 120^\circ$ rotations of the γ subunit within the $\alpha_3\beta_3$ hexamer (blue arrows). (B) Surface rendering of a map (State 1a) shows the bent F_O region with a tubular feature that extends from the rotor-distal portion to the c_8 -ring (orange arrow). (C) Cross-sections through the F_O region show α -helices from the a, b and A6L subunits (green arrows), a low density region in the rotor-distal portion (white arrow), the tubular extension from the rotor-distal portion to the rotor (orange arrows), and the c-ring (purple arrows). (D) Averaging the F_O regions from the seven different maps shows all of the features mentioned above with an improved signal-to-noise ratio for some features. Scale bars, 25 Å.

DOI: [10.7554/eLife.10180.003](https://doi.org/10.7554/eLife.10180.003)

The following figure supplements are available for Figure 1:

Figure supplement 1. Electron microscopy and model construction.

DOI: [10.7554/eLife.10180.004](https://doi.org/10.7554/eLife.10180.004)

Figure supplement 2. The seven observed states of the bovine mitochondrial ATP synthase.

DOI: [10.7554/eLife.10180.005](https://doi.org/10.7554/eLife.10180.005)

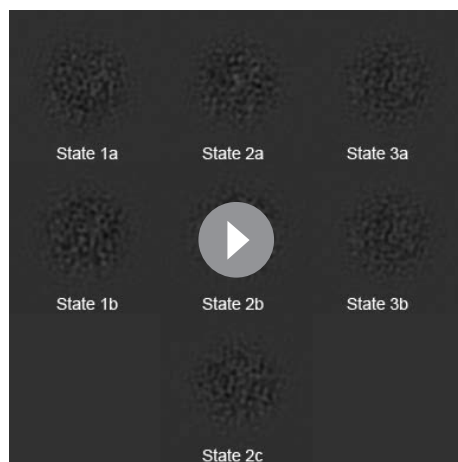
Figure supplement 3. Fourier shell correlation curves for the seven maps.

DOI: [10.7554/eLife.10180.006](https://doi.org/10.7554/eLife.10180.006)

Results

Specimens of ATP synthase were isolated from bovine heart mitochondria and prepared for cryo-EM as described previously (Baker et al., 2012; Runswick et al., 2013) (Figure 1—figure supplement 1). Initial 3D classification produced three classes, each of which appear to show a $\sim 120^\circ$ rotation of the central rotor within the F_1 region of the complex (Figure 1A, blue arrows), similar to what was seen previously with the *S. cerevisiae* V-ATPase (Zhao, et al., 2015a). Further classification of these three rotational states was able to separate state 1 into two sub-states, subsequently referred to as states 1a and 1b. State 2 could be divided into states 2a, 2b, and 2c, while state 3 could be separated into states 3a and 3b. Each of these 3D classes shows a different conformation of the enzyme (Figure 1—figure supplement 2 and Video 1). While the rotational states of the yeast V-ATPase were found to be populated unequally after 3D classification, bovine ATP synthase classes corresponding to different positions of the rotor had approximately equal populations. State 1 contained 43,039 particle images divided almost equally over its two sub-states, state 2 contained 48,053 particle images divided almost equally over its three sub-states, and state 3 contained 46,257 particle images divided almost equally over its two sub-states. The resolutions of the seven classes were between 6.4 and 7.4 Å (Figure 1—figure supplement 3).

There is a distinct bend in the F_O region of the complex between the portion that is proximal to the c_8 -ring and the portion that is distal to the c_8 -ring (Figure 1B and Figure 1—figure supplement 2). This bent structure was seen previously in a lower-resolution cryo-EM map of the bovine



Video 1. Slices through the seven cryo-EM maps. Cross-sections are shown moving from the F_1 region towards the F_0 region for states 1a, 1b, 2a, 2b, 2c, 3a, and 3b.

DOI: [10.7554/eLife.10180.007](https://doi.org/10.7554/eLife.10180.007)

feature with unusually low density (**Figure 1C**, white arrows). The content of this low-density region is uncertain. Low density in cryo-EM maps is often due to partial occupancy, flexibility, or disorder of a protein subunit. However, the low-density feature here is bounded on one side by unusually sharp density from the detergent micelle, suggesting more order than in the rest of the micelle, and on the other side by the a subunit, which also appears well ordered. Therefore, the low density region could be due to bound material with low density, possibly lipid, that remains after purification of the enzyme.

A novel feature in the F_0 region

The F_0 regions of all seven maps also revealed a remarkable feature not resolved previously in cryo-EM maps of ATP synthases (*Baker et al., 2012; Allegretti et al., 2015; Lau et al., 2008; Rubinstein et al., 2003*). The feature appears to consist of an elongated membrane-embedded density, possibly an α -helix, that extends from the rotor-distal portion of F_0 to the c_8 -ring. The orientation of this density would cause it to pass through the inter-membrane space of the mitochondrion (**Figure 1B and C**, orange arrow). While not identified in the previous cryo-EM map of the enzyme at 18 Å resolution, the structure is consistent with a poorly-resolved ridge along the surface of the F_0 region seen in the earlier map (*Baker et al., 2012*). Because it extends from the bent end of the F_0 region, this feature may correspond to the soluble part of the e subunit. Indeed, a similar structure was observed in single particle EM of negatively stained ATP synthase dimers from bovine heart mitochondria, and was proposed to be interacting e subunits (*Minauro-Sanmiguel et al., 2005*). However, in the present structure the feature is not positioned to interact between dimers of the enzyme and its role in the complex remains unclear.

Subunit a, b and A6L in the F_0 region

In order to improve the signal-to-noise ratio for the F_0 region of the complex, the membrane regions from the seven different maps were aligned and averaged. Averaging maps increases the signal-to-noise ratio where the structures are similar, but blurs regions where the maps differ. In principle, this method could also be applied to other map regions of the ATP synthase or other heterogeneous protein complexes by applying an appropriate transform before averaging. Averaging the F_0 region provides a clear view of the portion of the F_0 region adjacent to the rotor, allowing the trans-membrane α -helices from the a, b, and A6L subunits to be identified reliably (**Figure 1C and D**, green arrows, and **Figure 2**). The c-ring has a lower density in the averaged membrane region than in the original maps, suggesting that its position differs between maps (**Figure 1C and D**,

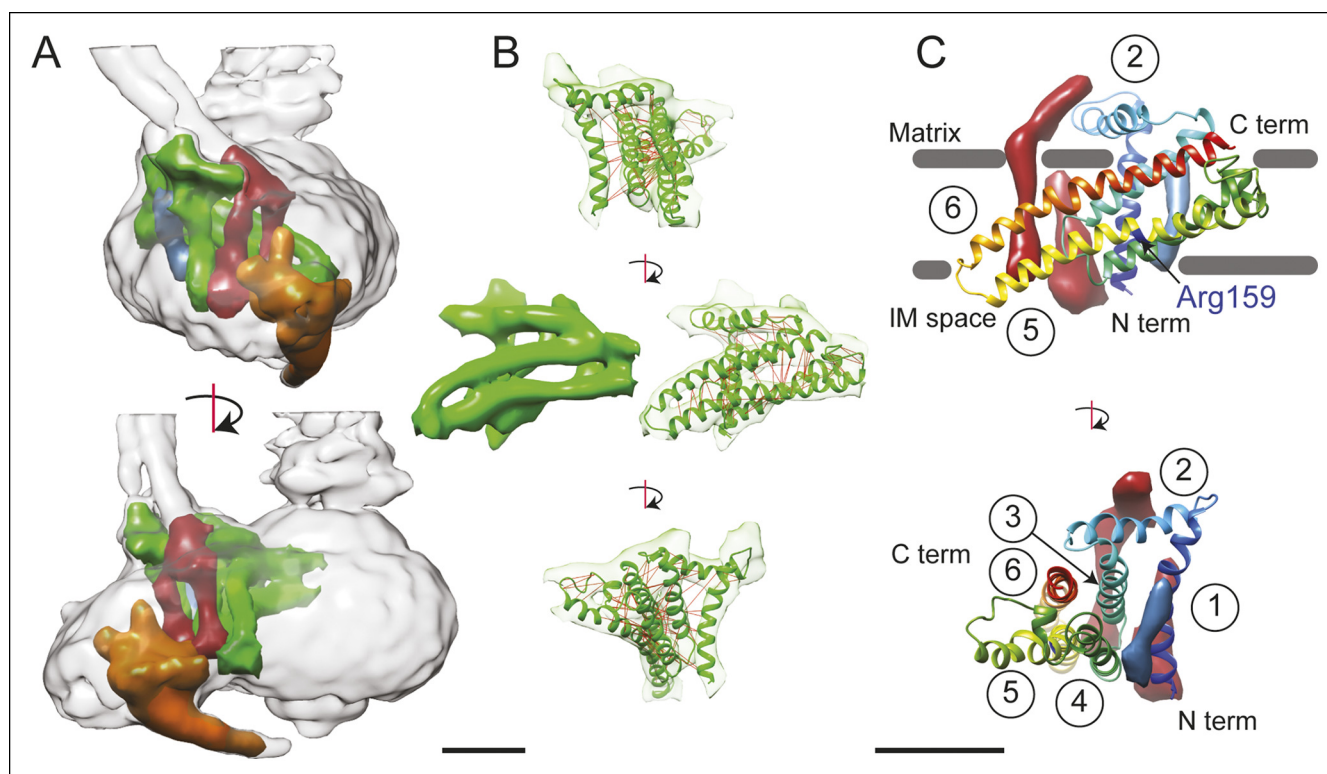


Figure 2. 3D structure of the F_O region. (A) In the F_O region of the complex, density was segmented for the a subunit (green), the b subunit (red), the A6L subunit (blue), and the structure thought to arise from subunits e and g (orange). (B) The a subunit sequence could be placed unambiguously into the cryo-EM density (green) by including constraints for residues predicted to be near to each other due to evolutionary covariance (red lines). (C) The a subunit (coloured with a gradient from blue to red to denote directionality from the N to C terminus) possesses six α -helices, numbered 1–6. Trans-membrane α -helices from subunits b and A6L are shown as volumes (red and blue, respectively). Five of the α -helices of subunit a are membrane-inserted while helix #2 runs along the matrix surface of the F_O region. The N terminus of the a subunit is on the inter-membrane space side of the subunit while the C terminus is on the matrix side. The highly conserved residue Arg159 is on the elongated and highly tilted α -helix #5. Scale bar, 25 Å.

DOI: [10.7554/eLife.10180.008](https://doi.org/10.7554/eLife.10180.008)

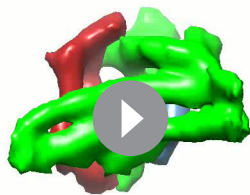
The following figure supplements are available for Figure 2:

Figure supplement 1. Analysis of evolutionary covariance of residues.

DOI: [10.7554/eLife.10180.009](https://doi.org/10.7554/eLife.10180.009)

purple arrows). The averaged density for the F_O region revealed the a subunit to have five membrane-inserted α -helices and an additional α -helix along the plane of the membrane surface (Figure 2). Three additional trans-membrane α -helices are also apparent, presumably two from the b subunit (Walker et al., 1987) and one from the A6L subunit (Fearnley and Walker, 1986). The mammalian mitochondrial a subunit possesses the two highly tilted α -helices in contact with the c-ring that were seen previously for the *Polytomella* sp. F-type ATP synthase (Allegritti et al., 2015) and *S. cerevisiae* V-ATPase (Zhao et al., 2015a) (Figure 2A).

A model for the a subunit was built into the cryo-EM density map using constraints from analysis of evolutionary covariance in sequences of the a subunit from different species. Analysis of covariance in evolutionarily related protein sequences can identify pairs of residues in a protein structure that are likely to interact physically with each other (Göbel et al., 1994; Cronet et al., 1993; Hopf et al., 2012; Ovchinnikov et al., 2014). Spatial constraints from covariance analysis were sufficient not only to identify tentatively trans-membrane α -helices of the a subunit that are adjacent to each other, but also suggest which face each α -helix presents to the other α -helices (Figure 2B and Video 2, red lines). The constraints show patterns of interaction consistent with the predicted α -helical structure of the a subunit (Figure 2—figure supplement 1A), as well as interactions between the a subunit and the outer α -helix of a c subunit in the c_8 -ring (Figure 2—figure supplement 1B). As a result, we were able to trace the path of the a subunit polypeptide through the cryo-EM density



Video 2. Fold of the a subunit. The density corresponding to the a subunit (green), membrane-inserted portion of the b subunit (red), and A6L subunit (blue) are shown, in addition to a ribbon diagram for the a subunit (green) and the top 90 constraints from analysis of covarying residues in the a subunit sequence (red lines). 6% of the constraints could not be satisfied, which is consistent with the false positive rate from known structures (Marks et al., 2011). Scale bar, 25 Å.

DOI: [10.7554/eLife.10180.010](https://doi.org/10.7554/eLife.10180.010)

of the subunit is in the inter-membrane space of the mitochondrion. The first α -helix extends vertically across the F_O region distal to the contact of the a subunit and c_8 -ring. The two trans-membrane α -helices of the b subunit are packed against one surface of helix #1 while the single trans-membrane α -helix from the A6L subunit is packed against its opposite surface. The second density region, interpreted as an α -helix of the a subunit, is not membrane-inserted and extends along the matrix surface of the F_O region connecting the membrane-inserted α -helix #1 with a membrane-inserted helical-hairpin composed of α -helices #3 and #4. This hairpin of the third and fourth α -helices does not appear to cross the F_O region fully, as seen previously in the *Polytomella* sp. ATP synthase (Allegretti et al., 2015). The final two trans-membrane helices are the two highly tilted α -helices seen previously with the *Polytomella* sp. ATP synthase and *S. cerevisiae* V-ATPase, with the C terminus of the a subunit on the matrix side of the F_O region. Within this structure, Arg159, which is essential and completely conserved, is found near the middle of the long tilted α -helix #5 nearer the inter-membrane space side of the F_O region, different from its predicted position in the *Polytomella* sp. enzyme (Allegretti et al., 2015).

Docking of atomic models into the cryo-EM maps

To analyze the different enzyme conformations detected by 3D classification, the maps were segmented and available crystal structures for the F_1 : F_1 complex (Gledhill et al., 2007), F_1 peripheral stalk complex (Rees et al., 2009), peripheral stalk alone (Dickson et al., 2006), and F_1 - c_8 complex (Watt et al., 2010) were combined into each of the maps by MDFF (Trabuco et al., 2008). Residues for the b subunit were extended from the N terminus of the b subunit crystal structure into the membrane region based on trans-membrane α -helix prediction. While MDFF with maps in this resolution range cannot be used to determine the locations or conformations of amino acid side chains, loops, or random-coil segments of models, it can show the positioning of α -helices in the structures. Figures 3A and B compare the fitting for state 1a (Figure 3A) and state 1b (Figure 3B), illustrating the accuracy with which α -helical segments could be resolved in the maps of different sub-states. The atomic model alone for state 1a is shown in Figure 3C, with the c_8 -ring removed for clarity in Figure 3D. Transitions between the different states were illustrated by linear interpolation (Video 3). As seen previously for the *S. cerevisiae* V-ATPase, almost all of the subunits in the enzyme undergo conformational changes on transition between states (Zhao, et al., 2015a). Because there were two sub-states identified for states 1 and 3 there is only a single sub-state to sub-state transition for

map. The fit of the α -helices in the a subunit density was improved by molecular dynamics flexible fitting (MDFF) (Trabuco et al., 2008) and the 34 residue long connecting loop from residues 115 to 148 was built with Rosetta (Rohl et al., 2004) (Figure 2B and Video 2). This connecting loop was built to be physically reasonable, but because its structure is not derived from experimental data it is not included in the discussion below. The final model places the α carbons of the residues in the co-varying pairs within 15 Å of each other in 94% of the top 90 identified pairs, with an average C_α to C_α distance of 10.3 Å. The 6% of constraints that are violated by the model are consistent with the false positive rate observed when testing covariance analysis approaches with proteins of known structure (Marks et al., 2011).

Description of the a subunit structure

The mammalian a subunit appears to consist of six α -helices, with five α -helices that penetrate into the membrane (Figure 2C). The N terminus

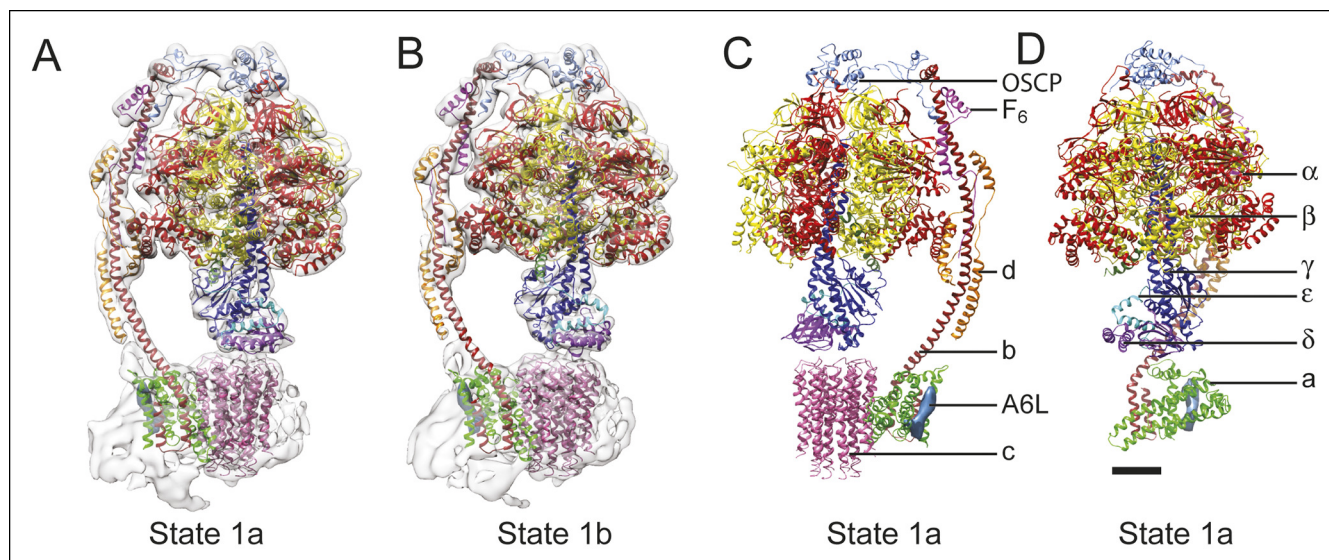


Figure 3. Docking of atomic models into the cryo-EM maps. Fitting of all available atomic models into the density map is shown for state 1a (A) and state 1b (B). State 1a is also shown in a different orientation and without the density map (C) and with the c_8 -ring removed for clarity (D). The apparent gap between the c_8 -ring and γ and δ subunits is filled with amino acid side chains and is the same as was seen in the crystal structure of the F_1 - c_8 complex (Watt et al., 2010). Scale bar, 25 Å.

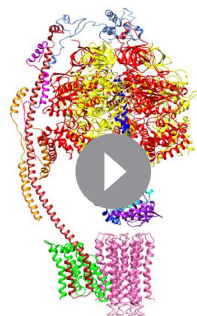
DOI: 10.7554/eLife.10180.011

The following figure supplements are available for Figure 3:

Figure supplement 1. Differences between sub-states.

DOI: 10.7554/eLife.10180.012

these two states. In comparison, three different sub-states were identified for state 2 and consequently there are three sub-state to sub-state transitions that are possible for this state. All of the sub-state to sub-state transitions include a slight rotation of the c_8 -ring against the a subunit. It is possible that this movement is due to partial disruption of the subunit a/ c_8 -ring interface. However, the structural differences within the F_0 regions of different classes are significantly smaller than the structural differences seen elsewhere in the enzyme, suggesting that these changes do not originate from disruption within the membrane region of the complex and instead reflect flexibility in the enzyme.



Video 3. Conformation changes during the rotary cycle. Linear interpolation is shown between one of each of the main states identified by 3D classification (state 1a, 2a, and 3a) showing the large conformational changes that occur during rotation. Scale bar, 25 Å.

[please view movie as loop]

DOI: 10.7554/eLife.10180.013

The largest change between the sub-states of each state can be approximated by rotations of the $\alpha_3\beta_3$ hexamer relative to the rest of the complex by angles ranging from 10 to 16°. A comparison of the maps for the different sub-states and the axes of these rotations are shown in **Figure 3—figure supplement 1**. The resulting conformational changes can be seen most clearly in **Videos 4 and 5**. The state 1a to 1b transition reveals a bending of the peripheral stalk towards the top of the F_1 region near the OSCP and F_6 subunits (**Videos 4 and 5**, panel A). In comparison, the state 3a to 3b transition reveals bending of the peripheral stalk near where the b subunit enters the membrane (**Videos 4 and 5**, panel D). Transitions between the three sub-states of state 2 show both motions: the transition between 2a and 2b shows mostly bending of the peripheral stalk near OSCP and F_6 subunits, while the 2b and 2c transition shows mostly bending near the

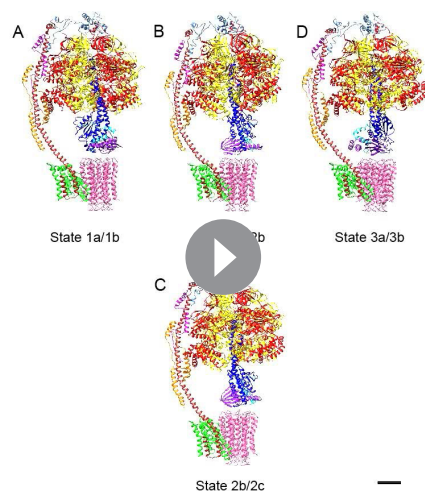
membrane-inserted portion of the peripheral stalk (**Videos 4 and 5**, panels B and C, respectively). The transition from state 2a to 2c shows a combined bending at both of these positions. It is most likely that the different modes of bending exist in all of the states and further classification of larger datasets would be expected to reveal these complex motions. The different sub-states do not appear to have a specific sequence or represent specific intermediates in the catalytic rotation sequence. Instead, the differences in conformation between sub-states when taken together illustrate the flexibility of the enzyme, a property that has been linked to its rapid rate of enzymatic activity (**Zhao, et al., 2015a; Zhou et al., 2014**). The functional significance of the sub-states may also be determined by the orientation of the c_8 -ring with respect to the a subunit, as discussed below.

Discussion

Predicting the path of protons through membrane protein complexes has proven difficult, even in cases where high-resolution atomic models including bound water molecules are available from X-ray crystallography (**Hosler et al., 2006**). Nonetheless, features in the structure of the bovine mitochondrial F_0 region suggest a possible path for proton translocation similar to a model put forward based on the structure of the *Polytomella* sp. ATP synthase (**Allegretti et al., 2015**). The arrangement of α -helices in the F_0 region is remarkably similar to the arrangement of α -helices in the V_0 region of the yeast V-ATPase (**Zhao, et al., 2015a**), even though the V-ATPase a subunit has eight α -helices and little detectable sequence similarity with the F-type ATP synthase a subunit. The conserved general architecture of the membrane-inserted regions in F-type ATP synthases and V-type ATPases suggests that the observed arrangement of α -helices is functionally important and likely involved in proton translocation (**Figure 4A and B**). The matrix half channel of the ATP synthase is likely to be formed by the cavity between the c_8 -ring and the matrix ends of tilted α -helices #5 and #6 of the a subunit. The luminal half channel in the V-ATPase is probably formed entirely from α -helices from the a subunit, whereas the corresponding inter-membrane space half channel in the

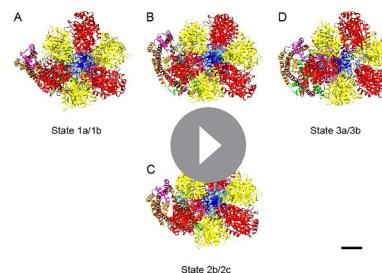
ATP synthase is likely composed of the inter-membrane space ends of α -helices #5 and #6 and one or both of the two trans-membrane α -helices of the b subunit. Defining the exact placement of half channels will likely require higher-resolution maps from cryo-EM or X-ray crystallography that reveal amino acid side chain density and bound water molecules.

In addition to bending and twisting of the peripheral stalk and central rotor of the enzyme, the differences between the sub-states of each state show variability in the rotational position of the c_8 -ring in relation to the a subunit



Video 4. Conformational differences between the different ATP synthase maps. Differences between conformations detected by 3D classification are illustrated by linear interpolation between state 1a and 1b, showing bending of the peripheral stalk near the OSCP and F_6 subunits (A), state 2a and 2b showing a similar bending of the peripheral stalk near the OSCP and F_6 subunits (B), state 2b and 2c showing bending of the peripheral stalk near the membrane region (C), and state 3a and 3b showing a similar bending of the peripheral stalk near the membrane region (D). Scale bar, 25 Å. [please view movie as loop]

DOI: 10.7554/eLife.10180.014



Video 5. Conformational differences between the different ATP synthase maps. The same interpolations as shown in **Video 4**, except viewed from the F_1 region towards the F_0 region. Scale bar, 25 Å. [please view movie as loop]

DOI: 10.7554/eLife.10180.015

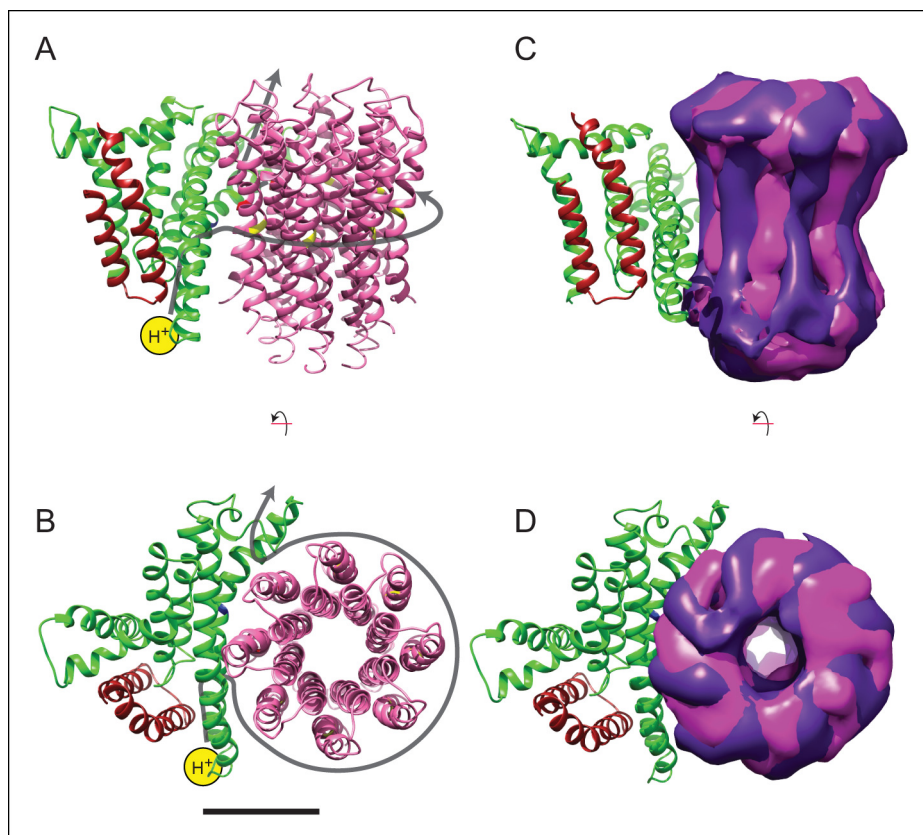


Figure 4. Model for proton translocation. (A and B) The a subunit (green), along with the membrane-intrinsic α -helices of the b subunit (red), form two clusters that could be the half channels needed for trans-membrane proton translocation. (C and D) The map segment corresponding to the c_8 -ring is shown for state 2a (pink) and state 2c (purple). The difference in rotational position of the c-ring is consistent with the Brownian fluctuations predicted for the generation of a net rotation. Scale bar, 25 Å.

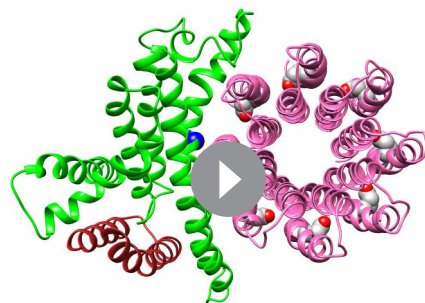
DOI: 10.7554/eLife.10180.016

(Figure 4C and D), even in the nucleotide-depleted conditions in which cryo-EM grids were frozen for this analysis. This lack of a rigid interaction between the c_8 -ring and a subunit is consistent with the Brownian ratchet model of proton translocation (Junge *et al.*, 1997). In the Brownian ratchet model, the rotational position of the ring fluctuates due to Brownian motion, but the ring cannot turn to place the Glu58 residue of a c subunit into the hydrophobic environment of the lipid bilayer until the Glu58 is protonated at the inter-membrane space half channel. Therefore, with this model, the different sub-states would correspond to energetically equivalent or nearly-equivalent conformations that occur due to Brownian motion. Video 6 illustrates the extent of rotational oscillation predicted from the transition between states 2a and 2c. It is most likely that this oscillation occurs as each c subunit passes the interface with the a subunit, with 8/3 c subunits on average contributing to the synthesis of one ATP molecule. The rotational flexibility of the c_8 -ring that exists even when the γ subunit is locked within the $\alpha_3\beta_3$ hexamer suggests that flexing and bending of the components of the ATP synthase smooths the coupling of the 8-step rotation of the c_8 -ring with the 3-step rotation of the F_1 region. This model suggests that the observed flexibility in the enzyme, which apparently complicates determination of atomic resolution structures directly from cryo-EM data, is also essential to the mechanism of ATP synthesis.

Materials and methods

Protein purification and electron microscopy

Bovine mitochondrial ATP synthase was purified as described previously (Runswick *et al.*, 2013) and cryo-EM specimen grids were prepared as described previously, except that glycerol was removed



Video 6. Brownian ratcheting. The different rotational positions of the c_8 -ring between the sub-states are illustrated by interpolating between states 2a and 2c. The conserved residue Arg159 is shown as a blue sphere. The movement is consistent with the Brownian ratcheting predicted during proton translocation in rotary ATPases. Glu58 residues are shown moving from the proton-locked conformation (Pogoryelov et al., 2009) to an open conformation (Pogoryelov et al., 2010; Symersky et al., 2012) when they are close to the conserved Arg159 residue. Scale bar, 25 Å. [please view movie as loop]

DOI: [10.7554/eLife.10180.017](https://doi.org/10.7554/eLife.10180.017)

cross-grating specimen with the program *mag_distortion_estimate* (Grant and Grigorieff, 2015a). The linear scaling parameters were 0.986 and 1.013, the azimuth of the distortion was 134.0° , and the program *mag_distortion_correct* was used to correct for this distortion in each dose-fractionated frame. The frames were then down-sampled to a pixel size of 1.64 Å by Fourier-space cropping and aligned with each other with the program *Unblur* (Grant and Grigorieff, 2015a). Defocus parameters were estimated from aligned sums of frames using *CTFFIND4* (Rohou and Grigorieff, 2015). Particle images were selected in *Relion* and subjected to 2D classification (Scheres, 2015; Scheres, 2012), yielding a set of 195,233 single particle coordinates selected from 5,825 movies. Local beam-induced motion was corrected for each particle with the program *alignparts_lmbfgs* (Rubinstein and Brubaker, 2015). Aligned dose-fractionated particle images were filtered and summed to optimize the signal-to-noise ratio at all spatial frequencies (Grant and Grigorieff, 2015b; Rubinstein and Brubaker, 2015; Baker et al., 2010), giving a set of particle images that were 256×256 pixels. These images were down-sampled to 128×128 pixels (pixel size of 3.28 Å) for determining particle orientations.

Initial single-particle alignment parameter values were obtained by 5 rounds of iterative grid search and reconstruction in *FREALIGN*'s mode 3 (Grigorieff, 2007), using the earlier published map of the enzyme as an initial reference (Baker et al., 2012). *FREALIGN*'s likelihood-based classification algorithm (Lyumkis et al., 2013) was then used to classify particles images into several maps, alternating between refinement of orientation parameters every 3rd or 4th iteration and class occupancy during other iterations. The final classification yielded 12 classes, of which 7 gave interpretable 3D maps. Only spatial frequencies up to $1/10 \text{ \AA}^{-1}$ were used during refinement to avoid fitting noise to high-resolution features in maps. All seven 3D maps had Fourier shell correlation values greater than 0.8 at this frequency.

Map analysis and model building

Segmentation of 3D maps was performed with *UCSF Chimera* (Goddard et al., 2007; Pintilie et al., 2010) and atomic structures were fit flexibly into 3D maps using *NAMD* with Molecular Dynamics Flexible Fitting (*MDFF*) (Trabuco et al., 2008). The F_O regions from the seven different 3D maps

from specimens prior to grid freezing with a 7 kDa molecular weight cutoff Zeba Spin centrifuged desalting column (Thermo Scientific) and nano-fabricated grids with 500 nm holes were used (Marr et al., 2014). After optimization of grid freezing conditions, micrographs were recorded from three grids on a Titan Krios microscope (FEI) operated at 300 kV with parallel illumination of a 2.5 μm diameter area of the specimen and an electron fluency of $3 \text{ el}/\text{\AA}^2/\text{s}$. A 70 μm objective aperture was employed with a nominal magnification of $18,000 \times$ onto a K2 Summit direct detector device (Gatan Inc.) operated in super-resolution mode with a 1.64 Å physical pixel and 0.82 Å super-resolution pixel. With no specimen present, the rate of exposure of the detector was $8 \text{ el}/\text{pixel}/\text{s}$. Exposure-fractionated movies of 20.1 s were recorded as stacks of 67 frames, so that selected specimen areas were exposed with a total of $60.3 \text{ el}/\text{\AA}^2$. Data collection was automated with *SerialEM* (Mastronarde, 2005).

Image processing

Magnification anisotropy (Zhao et al., 2015b) under the conditions described above was measured previously from images of a standard

were aligned and averaged in real space with *UCSF Chimera* and *Situs* (Wriggers et al., 1999). Co-varying pairs of residues were detected in the full bovine mitochondrial ATP synthase a subunit sequence (NCBI reference YP_209210.1) with the program *EVcouplings* (Hopf et al., 2012) using a pseudo-likelihood maximization approach and the top 90 connections were considered in the analysis. The protein was not assumed to have trans-membrane α -helices and the job was run as a quick launch with all other parameters at default settings. Evolutionary couplings between the a subunit and ATP synthase c subunit were detected with *GREMLIN* (Ovchinnikov et al., 2014) with an E-value threshold for multiple sequence alignments (MSAs) of 1×10^{-10} and *Jackhmmer* was used to produce MSAs over 8 iterations.

To build a model of the a subunit, six straight α -helices ($\varphi = -57^\circ$ and $\psi = -47^\circ$) were built in *UCSF Chimera*. These α -helices were fit manually in the map of the average F_O region in the only orientations that satisfied constraints from evolutionary covariance analysis. For illustration, but not interpretation, loops connecting these helices were also included in the model. Randomly structured connecting loops between the α -helices were built with *Modeller* (Eswar et al., 2006) within *UCSF Chimera* and fitted into the density with *MDFF* with a low density scaling factor (gscale = 0.3) over 200,000 steps (200 ps). Bond lengths and angles were then idealized with *Rosetta* (idealize_jd2 command) and the loop between residues 115 and 148 rebuilt in *Rosetta* (loopmodel command) using the quick_ccd method of remodelling (Dimairo et al., 2009). Each output structure included an all-atom relaxation in the density map with a score weight of 0.1. The lowest-energy model of 100 models was selected and angles were idealized and the structure energy-minimized with *UCSF Chimera*. Loops beside the one from residues 115 and 148 were too short for this process to be useful. The b subunit crystal structure was extended into the F_O region of the map based on trans-membrane α -helix prediction from MEMSAT-SVM (Nugent and Jones, 2009).

Acknowledgements

We thank Richard Henderson and Voula Kanelis for a critical reading of this manuscript. A preprint of this manuscript was first deposited on bioRxiv.org (<http://dx.doi.org/10.1101/023770>) on August 11, 2015. This work was supported by operating grant MOP 81294 from the Canadian Institutes of Health Research (JLR) and Medical Research Council grant U105663150 (JW). AZ was supported by a postgraduate scholarship from the Canadian Institutes of Health Research, an award from The Hospital for Sick Children, and a U of T excellence award. DGS was supported by a postgraduate scholarship from the Natural Sciences and Engineering Research Council and an award from The Hospital for Sick Children. JLR holds the Canada Research Chair in Electron Cryomicroscopy.

Additional information

Funding

Funder	Grant reference number	Author
Canadian Institutes of Health Research	MOP 81294	John L Rubinstein
Medical Research Council	U105663150	John E Walker
Howard Hughes Medical Institute		Alexis Rohou Nikolaus Grigorieff
Canada Research Chairs (Chaires de recherche du Canada)		John L Rubinstein
Canadian Institutes of Health Research	postgraduate scholarship	Anna Zhou
Natural Sciences and Engineering Research Council of Canada	postgraduate scholarship	Daniel G Schep

The funders had no role in study design, data collection and interpretation, or the decision to submit the work for publication.

Author contributions

AZ, AR, DGS, Acquisition of data, Analysis and interpretation of data, Drafting or revising the article; JVB, MGM, Acquisition of data, Drafting or revising the article, Contributed unpublished essential data or reagents; JEJ, Conception and design, Drafting or revising the article, Contributed unpublished essential data or reagents; NG, JLR, Conception and design, Analysis and interpretation of data, Drafting or revising the article

Author ORCIDs

Alexis Rohou,  <http://orcid.org/0000-0002-3343-9621>

Additional files**Major datasets**

The following datasets were generated:

Author(s)	Year	Dataset title	Dataset ID and/or URL	Database, license, and accessibility information
Zhou A, Rohou A, Schep DG, Bason JV, Montgomery MG, Walker JE, Grigorieff N, Rubinstein J	2015	Bovine mitochondrial ATP synthase state 1a	http://www.ebi.ac.uk/pdbe/entry/emdb/EMD-3164	Publicly available at the Electron Microscopy Data Bank.
Zhou A, Rohou A, Schep DG, Bason JV, Montgomery MG, Walker JE, Grigorieff N, Rubinstein J	2015	Bovine mitochondrial ATP synthase state 1b	http://www.ebi.ac.uk/pdbe/entry/emdb/EMD-3165	Publicly available at the Electron Microscopy Data Bank.
Zhou A, Rohou A, Schep DG, Bason JV, Montgomery MG, Walker JE, Grigorieff N, Rubinstein J	2015	Bovine mitochondrial ATP synthase state 2a	http://www.ebi.ac.uk/pdbe/entry/emdb/EMD-3166	Publicly available at the Electron Microscopy Data Bank.
Zhou A, Rohou A, Schep DG, Bason JV, Montgomery MG, Walker JE, Grigorieff N, Rubinstein J	2015	Bovine mitochondrial ATP synthase state 2b	http://www.ebi.ac.uk/pdbe/entry/emdb/EMD-3167	Publicly available at the Electron Microscopy Data Bank.
Zhou A, Rohou A, Schep DG, Bason JV, Montgomery MG, Walker JE, Grigorieff N, Rubinstein J	2015	Bovine mitochondrial ATP synthase state 2c	http://www.ebi.ac.uk/pdbe/entry/emdb/EMD-3168	Publicly available at the Electron Microscopy Data Bank.
Zhou A, Rohou A, Schep DG, Bason JV, Montgomery MG, Walker JE, Grigorieff N, Rubinstein J	2015	Bovine mitochondrial ATP synthase state 3a	http://www.ebi.ac.uk/pdbe/entry/emdb/EMD-3169	Publicly available at the Electron Microscopy Data Bank.
Zhou A, Rohou A, Schep DG, Bason JV, Montgomery MG, Walker JE, Grigorieff N, Rubinstein J	2015	Bovine mitochondrial ATP synthase state 3b	http://www.ebi.ac.uk/pdbe/entry/emdb/EMD-3170	Publicly available at the Electron Microscopy Data Bank.

Zhou A, Rohou A, Schep DG, Bason JV, Montgomery MG, Walker JE, Grigorieff N, Rubinstein J	2015	Bovine mitochondrial ATP synthase state 1a	http://www.rcsb.org/pdb/explore/explore.do?structureId=5ARA	Publicly available at the Protein Data Bank.
Zhou A, Rohou A, Schep DG, Bason JV, Montgomery MG, Walker JE, Grigorieff N, Rubinstein J	2015	Bovine mitochondrial ATP synthase state 1b	http://www.rcsb.org/pdb/explore/explore.do?structureId=5ARE	Publicly available at the Protein Data Bank.
Zhou A, Rohou A, Schep DG, Bason JV, Montgomery MG, Walker JE, Grigorieff N, Rubinstein J	2015	Bovine mitochondrial ATP synthase state 2a	http://www.rcsb.org/pdb/explore/explore.do?structureId=5ARH	Publicly available at the Protein Data Bank.
Zhou A, Rohou A, Schep DG, Bason JV, Montgomery MG, Walker JE, Grigorieff N, Rubinstein J	2015	Bovine mitochondrial ATP synthase state 2b	http://www.rcsb.org/pdb/explore/explore.do?structureId=5ARI	Publicly available at the Protein Data Bank.
Zhou A, Rohou A, Schep DG, Bason JV, Montgomery MG, Walker JE, Grigorieff N, Rubinstein J	2015	Bovine mitochondrial ATP synthase state 2c	http://www.rcsb.org/pdb/explore/explore.do?structureId=5FIJ	Publicly available at the Protein Data Bank.
Zhou A, Rohou A, Schep DG, Bason JV, Montgomery MG, Walker JE, Grigorieff N, Rubinstein J	2015	Bovine mitochondrial ATP synthase state 3a	http://www.rcsb.org/pdb/explore/explore.do?structureId=5FIK	Publicly available at the Protein Data Bank.
Zhou A, Rohou A, Schep DG, Bason JV, Montgomery MG, Walker JE, Grigorieff N, Rubinstein J	2015	Bovine mitochondrial ATP synthase state 3b	http://www.rcsb.org/pdb/explore/explore.do?structureId=5FIL	Publicly available at the Protein Data Bank.
Zhou A, Rohou A, Schep DG, Bason JV, Montgomery MG, Walker JE, Grigorieff N, Rubinstein J	2015	Bovine mitochondrial ATP synthase with averaged membrane region	http://www.ebi.ac.uk/pdbe/entry/emdb/EMD-3181	Publicly available at the Electron Microscopy Data Bank.

References

- Allegretti M**, Klusch N, Mills DJ, Vonck J, Kühlbrandt W, Davies KM. 2015. Horizontal membrane-intrinsic α -helices in the stator a-subunit of an F-type ATP synthase. *Nature* **521**:237–240. doi: [10.1038/nature14185](https://doi.org/10.1038/nature14185)
- Baker LA**, Smith EA, Bueler SA, Rubinstein JL. 2010. The resolution dependence of optimal exposures in liquid nitrogen temperature electron cryomicroscopy of catalase crystals. *Journal of Structural Biology* **169**:431–437. doi: [10.1016/j.jsb.2009.11.014](https://doi.org/10.1016/j.jsb.2009.11.014)
- Baker LA**, Watt IN, Runswick MJ, Walker JE, Rubinstein JL. 2012. Arrangement of subunits in intact mammalian mitochondrial ATP synthase determined by cryo-EM. *Proceedings of the National Academy of Sciences of the United States of America* **109**:11675–11680. doi: [10.1073/pnas.1204935109](https://doi.org/10.1073/pnas.1204935109)
- Belogradov GI**, Tomich JM, Hatefi Y. 1996. Membrane topography and near-neighbor relationships of the mitochondrial ATP synthase subunits e, f, and g*. *The Journal of Biological Chemistry* **271**:20340–20345. doi: [10.1074/jbc.271.34.20340](https://doi.org/10.1074/jbc.271.34.20340)
- Boyer PD**. 1997. The ATP synthase—a splendid molecular machine. *Annual Review of Biochemistry* **66**:717–749. doi: [10.1146/annurev.biochem.66.1.717](https://doi.org/10.1146/annurev.biochem.66.1.717)
- Carroll J**, Fearnley IM, Wang Q, Walker JE. 2009. Measurement of the molecular masses of hydrophilic and hydrophobic subunits of ATP synthase and complex I in a single experiment. *Analytical Biochemistry* **395**:249–255. doi: [10.1016/j.ab.2009.08.006](https://doi.org/10.1016/j.ab.2009.08.006)

- Chen R, Runswick MJ, Carroll J, Fearnley IM, Walker JE. 2007. Association of two proteolipids of unknown function with ATP synthase from bovine heart mitochondria. *FEBS Letters* **581**:3145–3148. doi: [10.1016/j.febslet.2007.05.079](https://doi.org/10.1016/j.febslet.2007.05.079)
- Cronet P, Sander C, Vriend G. 1993. Modeling of transmembrane seven helix bundles. *Protein Engineering* **6**:59–64. doi: [10.1093/protein/6.1.59](https://doi.org/10.1093/protein/6.1.59)
- Davies KM, Strauss M, Daum B, Kief JH, Osiewacz HD, Rycovska A, Zickermann V, Kühlbrandt W. 2011. Macromolecular organization of ATP synthase and complex I in whole mitochondria. *Proceedings of the National Academy of Sciences of the United States of America* **108**:14121–14126. doi: [10.1073/pnas.1103621108](https://doi.org/10.1073/pnas.1103621108)
- Dickson VK, Silvester JA, Fearnley IM, Leslie AGW, Walker JE. 2006. On the structure of the stator of the mitochondrial ATP synthase. *The EMBO Journal* **25**:2911–2918. doi: [10.1038/sj.emboj.7601177](https://doi.org/10.1038/sj.emboj.7601177)
- Dimairo F, Tyka MD, Baker ML, Chiu W, Baker D. 2009. Refinement of protein structures into low-resolution density maps using rosetta. *Journal of Molecular Biology* **392**:181–190. doi: [10.1016/j.jmb.2009.07.008](https://doi.org/10.1016/j.jmb.2009.07.008)
- Eswar N, Webb B, Marti-Renom MA, Madhusudhan MS, Eramian D, Shen Min-Yi, Pieper U, Sali A, et al. 2006. Comparative protein structure modeling using modeller. *Current Protocols in Bioinformatics. Chapter 5:Unit 5: 5.6.1–5.6.5*. doi: [10.1002/0471250953.bi0506s15](https://doi.org/10.1002/0471250953.bi0506s15)
- Fearnley IM, Walker JE. 1986. Two overlapping genes in bovine mitochondrial DNA encode membrane components of ATP synthase. *The EMBO Journal* **5**:2003–2008.
- Gledhill JR, Montgomery MG, Leslie AGW, Walker JE. 2007. How the regulatory protein, IF(1), inhibits F(1)-ATPase from bovine mitochondria. *Proceedings of the National Academy of Sciences of the United States of America* **104**:15671–15676. doi: [10.1073/pnas.0707326104](https://doi.org/10.1073/pnas.0707326104)
- Goddard TD, Huang CC, Ferrin TE. 2007. Visualizing density maps with UCSF chimera. *Journal of Structural Biology* **157**:281–287. doi: [10.1016/j.jsb.2006.06.010](https://doi.org/10.1016/j.jsb.2006.06.010)
- Grant T, Grigorieff N. 2015a. Automatic estimation and correction of anisotropic magnification distortion in electron microscopes. *Journal of Structural Biology* **192**:204–208. doi: [10.1016/j.jsb.2015.08.006](https://doi.org/10.1016/j.jsb.2015.08.006)
- Grant T, Grigorieff N. 2015b. Measuring the optimal exposure for single particle cryo-EM using a 2.6 Å reconstruction of rotavirus VP6. *eLife* **4**:e06980 doi: [10.7554/eLife.06980.015](https://doi.org/10.7554/eLife.06980.015)
- Grigorieff N. 2007. FREALIGN: high-resolution refinement of single particle structures. *Journal of Structural Biology* **157**:117–125. doi: [10.1016/j.jsb.2006.05.004](https://doi.org/10.1016/j.jsb.2006.05.004)
- Göbel U, Sander C, Schneider R, Valencia A. 1994. Correlated mutations and residue contacts in proteins. *Proteins* **18**:309–317. doi: [10.1002/prot.340180402](https://doi.org/10.1002/prot.340180402)
- Hopf TA, Colwell LJ, Sheridan R, Rost B, Sander C, Marks DS. 2012. Three-dimensional structures of membrane proteins from genomic sequencing. *Cell* **149**:1607–1621. doi: [10.1016/j.cell.2012.04.012](https://doi.org/10.1016/j.cell.2012.04.012)
- Hosler JP, Ferguson-Miller S, Mills DA. 2006. Energy transduction: proton transfer through the respiratory complexes. *Annual Review of Biochemistry* **75**:165–187. doi: [10.1146/annurev.biochem.75.062003.101730](https://doi.org/10.1146/annurev.biochem.75.062003.101730)
- Jiko C, Davies KM, Shinzawa-Itoh K, et al. 2015. Bovine F₁o ATP synthase monomers bend the lipid bilayer in 2D membrane crystals. *eLife* **4**. doi: [10.7554/eLife.06119](https://doi.org/10.7554/eLife.06119)
- Junge W, Lill H, Engelbrecht S. 1997. ATP synthase: an electrochemical transducer with rotatory mechanics. *Trends in Biochemical Sciences* **22**:420–423. doi: [10.1016/S0968-0004\(97\)01129-8](https://doi.org/10.1016/S0968-0004(97)01129-8)
- Junge W, Nelson N. 2005. Structural biology. Nature's rotary electromotors. *Science* **308**:642–644. doi: [10.1126/science.1112617](https://doi.org/10.1126/science.1112617)
- Lau WCY, Baker LA, Rubinstein JL. 2008. Cryo-EM structure of the yeast ATP synthase. *Journal of Molecular Biology* **382**:1256–1264. doi: [10.1016/j.jmb.2008.08.014](https://doi.org/10.1016/j.jmb.2008.08.014)
- Lau WCY, Rubinstein JL. 2012. Subnanometre-resolution structure of the intact thermophilic H⁺-driven ATP synthase. *Nature* **481**:214–218. doi: [10.1038/nature10699](https://doi.org/10.1038/nature10699)
- Lyumkis D, Brilot AF, Theobald DL, Grigorieff N. 2013. Likelihood-based classification of cryo-EM images using FREALIGN. *Journal of Structural Biology* **183**:377–388. doi: [10.1016/j.jsb.2013.07.005](https://doi.org/10.1016/j.jsb.2013.07.005)
- Marks DS, Colwell LJ, Sheridan R, Hopf TA, Pagnani A, Zecchina R, Sander C. 2011. Protein 3D structure computed from evolutionary sequence variation. *PLoS One* **6**:e28766 doi: [10.1371/journal.pone.0028766.s022](https://doi.org/10.1371/journal.pone.0028766.s022)
- Marr CR, Benlekbir S, Rubinstein JL. 2014. Fabrication of carbon films with ~ 500nm holes for cryo-EM with a direct detector device. *Journal of Structural Biology* **185**:42–47. doi: [10.1016/j.jsb.2013.11.002](https://doi.org/10.1016/j.jsb.2013.11.002)
- Mastrorarde DN. 2005. Automated electron microscope tomography using robust prediction of specimen movements. *Journal of Structural Biology* **152**:36–51. doi: [10.1016/j.jsb.2005.07.007](https://doi.org/10.1016/j.jsb.2005.07.007)
- Minauro-Sanmiguel F, Wilkens S, García José J. 2005. Structure of dimeric mitochondrial ATP synthase: novel F₀ bridging features and the structural basis of mitochondrial cristae biogenesis. *Proceedings of the National Academy of Sciences of the United States of America* **102**:12356–12358. doi: [10.1073/pnas.0503893102](https://doi.org/10.1073/pnas.0503893102)
- Nugent T, Jones DT. 2009. Transmembrane protein topology prediction using support vector machines. *BMC Bioinformatics* **10**:159 doi: [10.1186/1471-2105-10-159](https://doi.org/10.1186/1471-2105-10-159)
- Ovchinnikov S, Kamisetty H, Baker D. 2014. Robust and accurate prediction of residue–residue interactions across protein interfaces using evolutionary information. *eLife* **3**:1–21. doi: [10.7554/eLife.02030](https://doi.org/10.7554/eLife.02030)
- Pintilie GD, Zhang J, Goddard TD, Chiu W, Gossard DC. 2010. Quantitative analysis of cryo-EM density map segmentation by watershed and scale-space filtering, and fitting of structures by alignment to regions. *Journal of Structural Biology* **170**:427–438. doi: [10.1016/j.jsb.2010.03.007](https://doi.org/10.1016/j.jsb.2010.03.007)
- Pogoryelov D, Krah A, Langer JD, Yıldız Özkan, Faraldo-Gómez José D, Meier T. 2010. Microscopic rotary mechanism of ion translocation in the F₀ complex of ATP synthases. *Nature Chemical Biology* **6**:891–899. doi: [10.1038/nchembio.457](https://doi.org/10.1038/nchembio.457)

- Pogoryelov D**, Yildiz O, Faraldo-Gómez José D, Meier T. 2009. High-resolution structure of the rotor ring of a proton-dependent ATP synthase. *Nature Structural & Molecular Biology* **16**:1068–1073. doi: [10.1038/nsmb.1678](https://doi.org/10.1038/nsmb.1678)
- Rees DM**, Leslie AGW, Walker JE. 2009. The structure of the membrane extrinsic region of bovine ATP synthase. *Proceedings of the National Academy of Sciences of the United States of America* **106**:21597–21601. doi: [10.1073/pnas.0910365106](https://doi.org/10.1073/pnas.0910365106)
- Rohl CA**, Strauss CEM, Misura KMS, Baker D. 2004. Protein structure prediction using rosetta. *Methods in Enzymology* **383**:66–93. doi: [10.1016/S0076-6879\(04\)83004-0](https://doi.org/10.1016/S0076-6879(04)83004-0)
- Rohou A**, Grigorieff N. 2015. CTFIND4: fast and accurate defocus estimation from electron micrographs. *Journal of Structural Biology* **192**:216–221. doi: [10.1016/j.jsb.2015.08.008](https://doi.org/10.1016/j.jsb.2015.08.008)
- Rubinstein JL**, Brubaker MA. 2015. Alignment of cryo-EM movies of individual particles by optimization of image translations. *Journal of Structural Biology* **192**:188–195. doi: [10.1016/j.jsb.2015.08.007](https://doi.org/10.1016/j.jsb.2015.08.007)
- Rubinstein JL**, Walker JE, Henderson R. 2003. Structure of the mitochondrial ATP synthase by electron cryomicroscopy. *The EMBO Journal* **22**:6182–6192. doi: [10.1093/emboj/cdg608](https://doi.org/10.1093/emboj/cdg608)
- Runswick MJ**, Bason JV, Montgomery MG, Robinson GC, Fearnley IM, Walker JE. 2013. The affinity purification and characterization of ATP synthase complexes from mitochondria. *Open Biology* **3**:120160. doi: [10.1098/rsob.120160](https://doi.org/10.1098/rsob.120160)
- Scheres SHW**. 2012. RELION: implementation of a bayesian approach to cryo-EM structure determination. *Journal of Structural Biology* **180**:519–530. doi: [10.1016/j.jsb.2012.09.006](https://doi.org/10.1016/j.jsb.2012.09.006)
- Scheres SHW**. 2015. Semi-automated selection of cryo-EM particles in RELION-1.3. *Journal of Structural Biology* **189**:114–122. doi: [10.1016/j.jsb.2014.11.010](https://doi.org/10.1016/j.jsb.2014.11.010)
- Strauss M**, Hofhaus Götzt, Schröder RR, Kühlbrandt W. 2008. Dimer ribbons of ATP synthase shape the inner mitochondrial membrane. *The EMBO Journal* **27**:1154–1160. doi: [10.1038/emboj.2008.35](https://doi.org/10.1038/emboj.2008.35)
- Symersky J**, Osowski D, Walters DE, Mueller DM. 2012. Oligomycin frames a common drug-binding site in the ATP synthase. *Proceedings of the National Academy of Sciences of the United States of America* **109**:13961–13965. doi: [10.1073/pnas.1207912109](https://doi.org/10.1073/pnas.1207912109)
- Trabuco LG**, Villa E, Mitra K, Frank J, Schulten K. 2008. Flexible fitting of atomic structures into electron microscopy maps using molecular dynamics. *Structure (London, England : 1993)* **16**:673–683. doi: [10.1016/j.str.2008.03.005](https://doi.org/10.1016/j.str.2008.03.005)
- Walker JE**, Runswick MJ, Poulter L. 1987. ATP synthase from bovine mitochondria. the characterization and sequence analysis of two membrane-associated sub-units and of the corresponding cDNAs. *Journal of Molecular Biology* **197**:89–100. doi: [10.1016/0022-2836\(87\)90611-5](https://doi.org/10.1016/0022-2836(87)90611-5)
- Walker JE**. 1998. ATP synthesis by rotary catalysis (nobel lecture). *Angewandte Chemie International Edition* **37**:2308–2319. doi: [10.1002/\(SICI\)1521-3773\(19980918\)37:17<2308::AID-ANIE2308>3.0.CO;2-W](https://doi.org/10.1002/(SICI)1521-3773(19980918)37:17<2308::AID-ANIE2308>3.0.CO;2-W)
- Walker JE**. 2013. The ATP synthase: the understood, the uncertain and the unknown. *Biochemical Society Transactions* **41**:1–16. doi: [10.1073/pnas.96.9.4735](https://doi.org/10.1073/pnas.96.9.4735)
- Watt IN**, Montgomery MG, Runswick MJ, Leslie AGW, Walker JE. 2010. Bioenergetic cost of making an adenosine triphosphate molecule in animal mitochondria. *Proceedings of the National Academy of Sciences of the United States of America* **107**:16823–16827. doi: [10.1073/pnas.1011099107](https://doi.org/10.1073/pnas.1011099107)
- Wriggers W**, Milligan RA, Mccammon JA. 1999. Situs: a package for docking crystal structures into low-resolution maps from electron microscopy. *Journal of Structural Biology* **125**:185–195. doi: [10.1006/jsbi.1998.4080](https://doi.org/10.1006/jsbi.1998.4080)
- Zhao J**, Benlekbir S, Rubinstein JL. 2015a. Electron cryomicroscopy observation of rotational states in a eukaryotic v-ATPase. *Nature* **521**:241–245. doi: [10.1038/nature14365](https://doi.org/10.1038/nature14365)
- Zhao J**, Brubaker MA, Benlekbir S, Rubinstein JL. 2015b. Description and comparison of algorithms for correcting anisotropic magnification in cryo-EM images. *Journal of Structural Biology* **192**:209–215. doi: [10.1016/j.jsb.2015.06.014](https://doi.org/10.1016/j.jsb.2015.06.014)
- Zhou M**, Politis A, Davies RB, Liko I, Wu K-J, Stewart AG, Stock D, Robinson CV. 2014. Ion mobility-mass spectrometry of a rotary ATPase reveals ATP-induced reduction in conformational flexibility. *Nature Chemistry* **6**:208–215. doi: [10.1038/nchem.1868](https://doi.org/10.1038/nchem.1868)